

Prostate Phantom

Biopsy and Ultrasound Compatible



Multi-modality disposable phantom for the simulation of medical procedures related to the imaging and biopsy of the prostate

- ▶ Consists of synthetic rectum, perineum, prostate, urethra & optional internal lesions
- ▶ For training of transrectal ultrasound, prostate biopsy, brachytherapy & cryotherapy
- ▶ Self-healing tissue after multiple punctures
- ▶ DICOM files for MRI-fusion imaging and biopsy compatibility
- ▶ Compatible with end-fire & biplane probes

Biopsy and Ultrasound Compatible Phantom

COMPLETE IMAGING CAPABILITY

The prostate phantoms are composed of a water-based hydrogel material that enables superior ultrasound imaging properties versus the competition and are compatible with both standard side-fire and end-fire ultrasound probes.

Ideal for transrectal ultrasound calibration and training. DICOM files are included enabling MRI-overlay imaging and fusion biopsy.

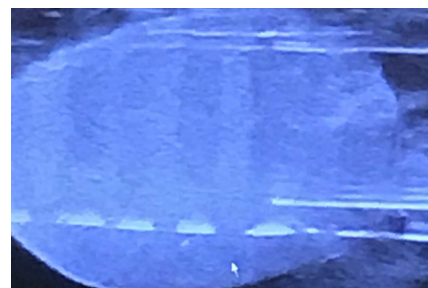


Sagittal Ultrasound image with two lesions

FUNCTIONAL SIMULATION OF BIOPSY AND THERAPY

The prostate phantom is the ideal product for urologic oncology prostate training.

The realistic material enables a functional biopsy; needle cores of synthetic tissue can be removed, validating biopsy technique for training purposes. Additionally, the internal lesions provide an effective training tool for brachytherapy and cryotherapy.



Prostate brachytherapy seed deposition

MODELS

ARTICLE CODE	PROSTATE PHANTOM
860000027175	With lesions
860000027113	Without lesions (used for spacing training)
860000027168	With lesions – Free-hand Access

All phantoms contain a USB key with calibrated MRI DICOM files, except for 860000027113



Transperineal prostate biopsy with PrecisionPoint™



Experts in diagnosis and treatment technologies

+31 (0)53 - 4836410
info@jj-medtech.nl
www.jj-medtech.nl