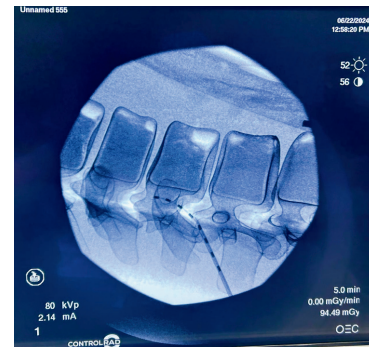
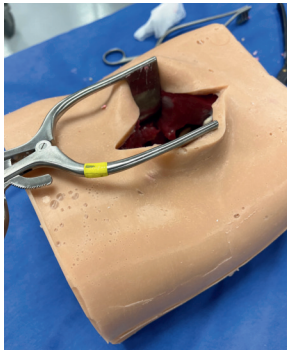


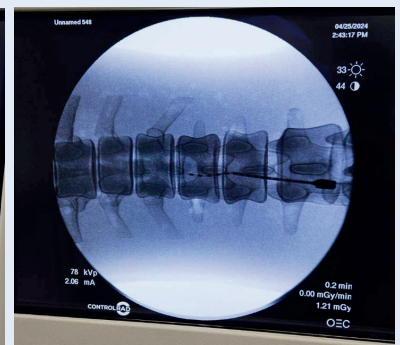
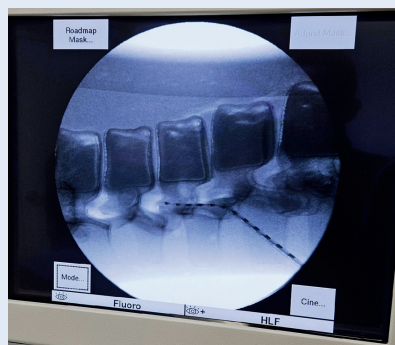
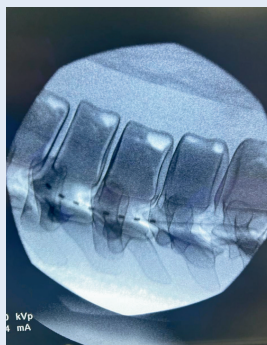
Thoracolumbar Spine - Neuromodulation (L1 - T6)



Designed for realistic clinical simulation of paddle lead spinal cord stimulation (SCS), including dissection, laminectomy, and lead placement. Includes synthetic skin, muscle, bone (cortical and cancellous layers), ligamentum flavum and dura.

SKU: 860000027206

Thoracolumbar Spine - Neuromodulation (T6 - S2)



Designed for realistic epidural access and simulation of both spinal cord stimulation (SCS) and dorsal root ganglion (DRG) stimulation. Phantom has a durable skin and is reusable.

SKU: 860000027200